

# ASCO™ Solenoid Valves

For High and Low Temperature Applications, Pad Mounting Body  
Direct Operated, For Subbase 1/4" or 1/2"

3/2 NC  
Series  
**314**

- High and low temperature solenoid pilot valve intended for single acting actuator control
- Solenoid pilot valve with CNOMO size 30 interface (compatible with series 551-552-553)
- Epoxy moulded coil suitable for exterior applications
- Version with or without manual operator

## General

**Differential pressure** See «SPECIFICATIONS» [1 bar = 100 kPa]  
**Pneumatic interface** ISO 15218 (CNOMO E06.05.80, size 30)  
**Response time** 8 - 20 ms

fluids (*)	temperature range (TS)	seal materials (*)
air or inert gas	-25°C to +60°C	NBR (nitrile)
	-25°C to +90°C	FPM (fluoroelastomer)

## Materials in contact with fluid

(\*) Ensure that the compatibility of the fluids in contact with the materials is verified

<b>Body</b>	Aluminium, black cathaphoresis coating
<b>Threaded nut</b>	Steel
<b>Shading coil</b>	Copper
<b>Core tube</b>	Stainless steel
<b>Core and plugnut</b>	Stainless steel
<b>Springs</b>	Stainless steel
<b>Seals</b>	NBR (+60°C) or FPM (+90°C)

## Electrical characteristics

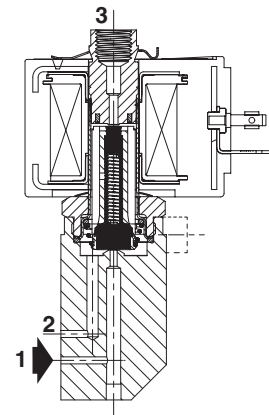
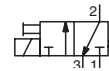
**Coil insulation class** F (+60°C) or H (+90°C)  
**Connector** Spade plug (cable Ø 6-10 mm)  
**Connector specification** ISO 4400 / EN 175301-803, form A  
**Electrical safety** IEC 335  
**Electrical enclosure protection** Moulded IP65 (EN 60529)  
**Standard voltages** DC (=) : 24V - 48V  
(Other voltages and 60 Hz on request) AC (-) : 24V - 48V - 115V - 230V/50 Hz

operator ambient temperature range (TS) (°C)	power ratings				replacement coil <sup>(1)</sup>	
	inrush ~	holding ~		hot/cold =	~	=
-25 to +55	(VA)	(VA)	(W)	(W)	230 V/50 Hz	24 V DC
	50	25	10,1	8,5/11,6	238613-059	238713-006
	50	25	10,1	8,5/11,6	238813-059	238913-006

<sup>(1)</sup> All 238 basic numbers are UL & CSA approved and marked with the UR (recognised component) & CSA logos.

## Options

- Connector with visual indication and peak voltage suppression or with cable length of 2 m



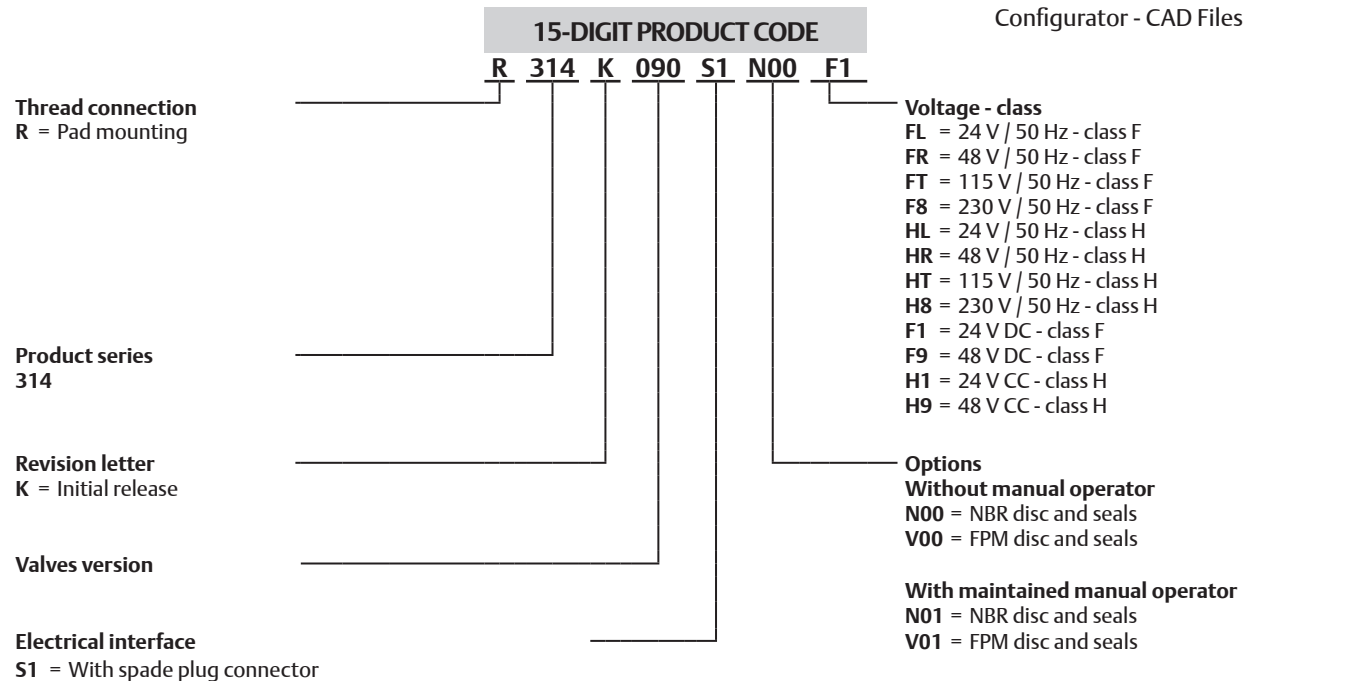
01481CB-2019/R02 Availability, design and specifications are subject to change without notice. All rights reserved.

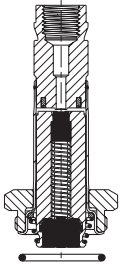
**Specifications**

pipe size	orifice size	flow coefficient Kv				operating pressure differential (bar)			power coil (W)		dimensions / type <sup>(1)</sup>	15-DIGIT PRODUCT CODE						
		1 → 2		2 → 3		min.	max. (PS)		~	=		voltage code						
		(mm)	(m³/h)	(l/min)	(m³/h)		(l/min)	air (*)				24 V/50 Hz	48 V/50 Hz	115 V/50 Hz	230 V/50 Hz	24 V/DC	48 V/DC	
								~										=
<b>Without manual operator</b>																		
<b>NC - Normally closed, NBR seals, low temperatures</b>																		
pad mounting	2	0,11	1,8	0,11	1,8	0	10	10	10,1	11,6	01	R314K090S1N00	FL	FR	FT	F8	F1	F9
<b>NC - Normally closed, FPM seals, high and low temperatures</b>																		
pad mounting	2	0,11	1,8	0,11	1,8	0	10	10	10,1	11,6	01	R314K090S1V00	HL	HR	HT	H8	H1	H9
<b>With maintained manual operator</b>																		
<b>NC - Normally closed, NBR seals, low temperatures</b>																		
pad mounting	2	0,11	1,8	0,11	1,8	0	10	10	10,1	11,6	01	R314K090S1N01	FL	FR	FT	F8	F1	F9
<b>NC - Normally closed, FPM seals, high and low temperatures</b>																		
pad mounting	2	0,11	1,8	0,11	1,8	0	10	10	10,1	11,6	01	R314K090S1V01	HL	HR	HT	H8	H1	H9

<sup>(1)</sup> For dimensions, see drawing(s) for each construction type on the following page(s).

(\*) Ensure that the compatibility of the fluids in contact with the materials is verified.



		Spare parts kits no. (*)					
		AC (~)			DC (=)		
			NBR	FPM		NBR	FPM
	R314K090	M200071	N00	V00	M200067	N00	V00

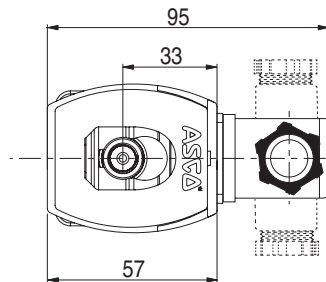
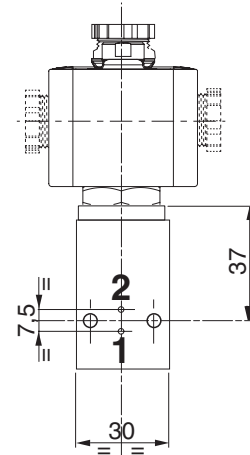
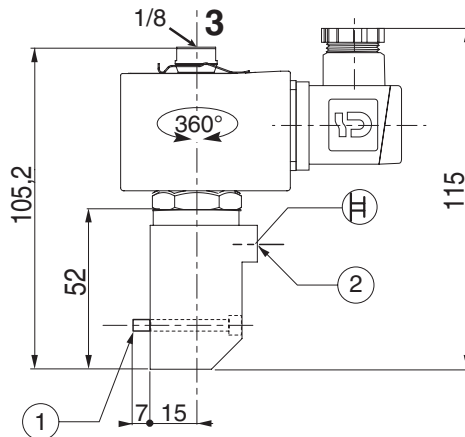
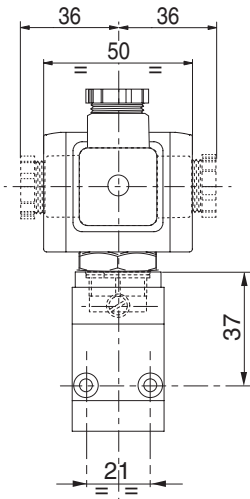
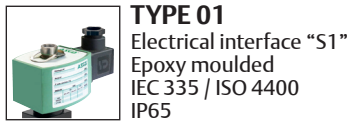
(\*) Ensure that the compatibility of the fluids in contact with the materials is verified.

## Installation

- The solenoid valves can be mounted in any position without affecting operation
- Solenoid valves supplied with mounting pad screws
- Installation on valve or single, non-joinable subbase with ISO 15218 (CNOMO, size 30) interface
- Pipe connection G 1/8 has standard thread according to ISO 228/1
- Installation/maintenance instructions are included with each valve

## Dimensions (mm), Weight (kg)

Configurator - CAD Files



- ① Mounting: 2 screws M4 x 35
- ② Manual operator location

type	weight <sup>(1)</sup>
01	0,49

<sup>(1)</sup> Incl. coil(s) and connector(s).

01481CB-2019/R02  
Availability, design and specifications are subject to change without notice. All rights reserved.

