

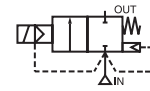
# ASCO™ Solenoid Valves

For CNG Applications, 2 way, NC, High Pressure, Pilot Operated, 1/2" Tapped

2/2  
Series  
**291**

## Features

- Rugged stainless steel valve with piston design built to withstand pressure ratings over 5,000 psi
- High flow design for fast CNG dispensing, reduces vehicle fill time
- The high quality PEEK piston guarantees a long operating life and a large temperature range
- Ambient temperature range -40°F to 158°F (-40°C to 70°C)
- PEEK piston provides tight sealing and durable operation
- Suitable for use in Class 1, Div.1 hazardous locations
- Explosionproof operator for use in potentially explosive atmospheres according to ATEX-Directive 2014/34/EU
- Easy electrical installation by means of the moulded-in supply cable, standard length two meters



## General

Differential pressure 10 - 350 bar [1 bar = 100kPa]  
Ambient temperature range -40°C to +70°C

fluids (*)	temperature range (TS)	seal materials (*)
CNG	-40°C to +70°C	FPM (fluoroelastomer)/ VMQ (silicone) High-grade PTFE / 302 stainless steel



## Materials in contact with fluid

(\*) Ensure that the compatibility of the fluids in contact with the materials is verified

Body	303 stainless steel
Core Tube	Aluminum bronze
Piston	PEEK
Core and plugnut	Stainless steel
Core springs	Stainless steel
Sealing (U-cup)	High-grade PTFE / 302 stainless steel
O-ring	FPM

## Electrical characteristics

Coil insulation class F  
Electrical safety IEC 335  
Standard voltages DC (=) : 24V - 48V

operator	power ratings	operator ambient temperature range (TS)	max. fluid temp	safety code	electrical enclosure protection (EN 60529)
	hot/cold = (W)				
PV	9.0 / 11.2	-40 to +65/70	70	II2G Ex mb II T4 / T3, II2D Ex mb IIIC Db	SS / IP67 moulded


## Specifications

pipe size	orifice size	flow coefficient Kv		operating pressure differential (bar)		voltage	Catalog number
				compressed natural gas			
(G)	(mm)	(m³/h)	(l/min)	min.	max.		
<b>NC - Normally closed</b>							
1/2	12	2.3	16	10	350	24V DC	G291B420A7100F1
						48V DC	G291B420A7100F9

90400GB-2020/R01 Availability, design and specifications are subject to change without notice. All rights reserved.

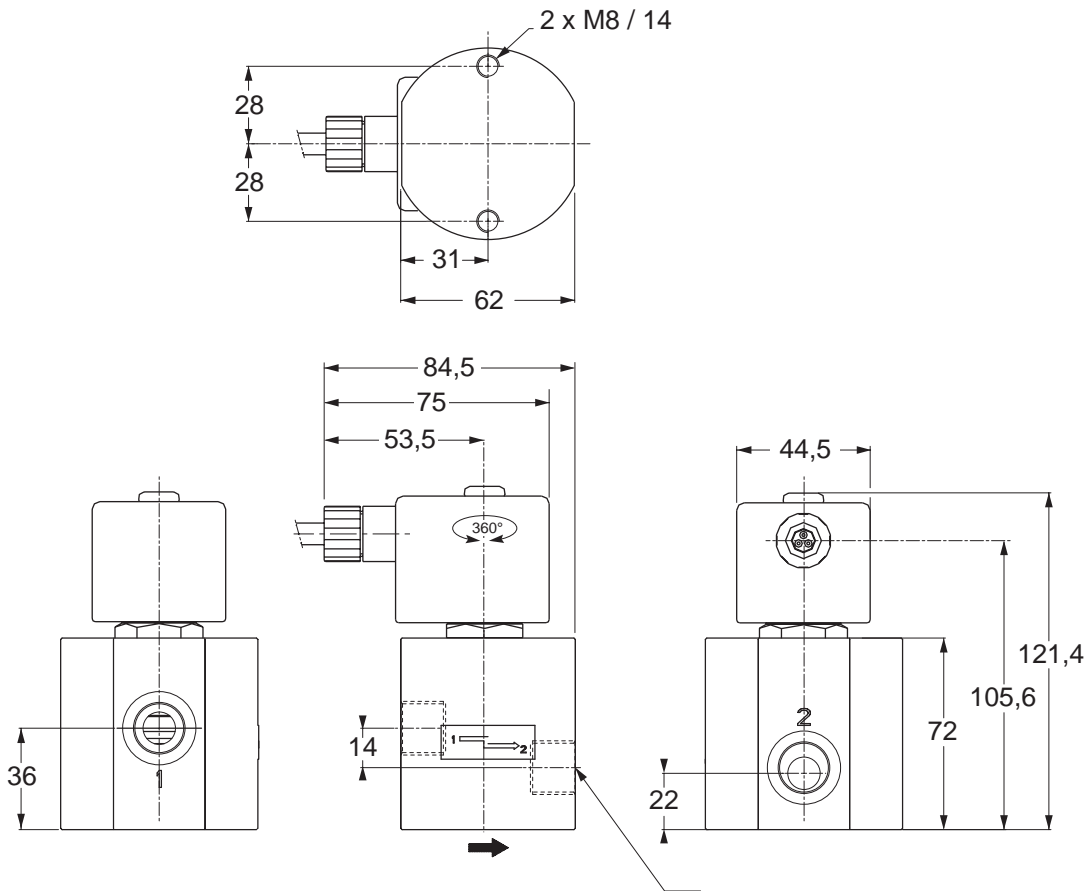
**Installation**

- The valves can be mounted in any position without affecting operation
- Thread connection: Pipe connections (G) have standard thread according to ISO 228/1
- Installation/maintenance instructions are included with each valve

**Dimensions (mm), Weight (kg)** 



**TYPE PV**  
Electrical interface "A7" (PV operator)  
Epoxy coated  
EN 60079-18 and EN 61241-18  
II2G Ex mb II - II2D Ex mb IIIC Db



operator	base catalogue number
PV	G291B420

90400GB-2020/R01  
Availability, design and specifications are subject to change without notice. All rights reserved.