

# ASCO™ Two-Valve Module with 50mm Operators

Nickel-Plated Brass Bodies | Air Pilot Operated | G 3/4"

2/2  
SERIES  
290

## Features

- A single unit consisting of two air operated valves for the temperature control of jacketed tanks/vessels designed as a feed or return flow module
- Inlet/outlet orifice offered in G thread connections
- Pneumatic connection with incorporated 4 x 6 mm instant fitting
- The two-valve module can be mounted in any position without affecting operation
- Optical position indicator on valve operator
- Can be integrated with an intelligent valve manifold system (AVENTICS G3) for higher level of automation and control over the temperature control process

## Construction

| Valve Parts in Contact with Fluids |                               |
|------------------------------------|-------------------------------|
| Valve Body                         | Brass, nickel-plated          |
| Stuffing Box Body                  | Polyamide, glass-fiber filled |
| Stem                               | Stainless Steel               |
| Disc                               | Brass                         |
| Stuffing Box Seal                  | PTFE Chevrons                 |
| Disc Seal                          | PTFE                          |
| Other Materials                    |                               |
| Operator                           | PA, glass-fiber filled        |
| Optical Position Indicator         | PA 12                         |

## General Specifications

**Pressure differential:** 0-145 psi (0-10 bar)

**Maximum allowable pressure:** 232 psi (16 bar)

**Ambient temperature range:** 14°F to 140°F (-10°C to 60°C)

**Maximum viscosity:** 2,780 SSU

**Pilot fluid:** Filtered air

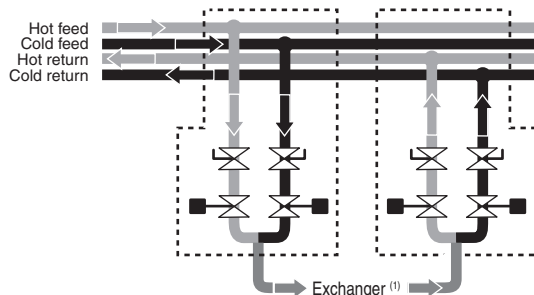
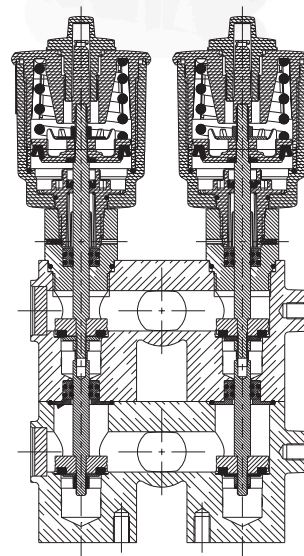
**Max. pilot pressure:** 145 psi (10 bar)

**Min. pilot pressure:** See next page

**Pilot fluid temperature:** 14°F to 140°F (-10°C to 60°C)

| Fluids*                     | Temperature Range             | Seal Materials* |
|-----------------------------|-------------------------------|-----------------|
| Water, Liquids groups 1 & 2 | 14°F to 140°F (-10°C to 60°C) | PTFE            |

\* Ensure that the compatibility of the fluids in contact with the materials is verified



(1) Provide for a unit of two valves for the feed loop and the return loop.

## Specifications English units (Metric)

| Pipework<br>(ISO 6708)                        | Cv Flow<br>(Kv = m <sup>3</sup> /h) | Pilot Pressure<br>psi (bar) |          | Operating Pressure<br>Differential psi (bar) |                        | Operator<br>Diameter mm | Catalog Number<br>(with Visual Position Indicator) |
|---|-------------------------------------|-----------------------------|----------|--|------------------------|-------------------------|--|
|   |                                     | Min.                        | Max.     | Min.   | Max.<br>Water, Liquids |                         |  |
| <b>Normally Closed - Entry Under the Disc</b> |                                     |                             |          |  |                        |                         |  |
| G 3/4"  | 5.6 (4.8)                           | 72.5 (5)                    | 145 (10) | 0  | 145 (10)               | 50                      | X29050914900100                                    |

## Installation

- The valves can be mounted in any position without affecting operation
- Pipe connection identifier is: G = G (ISO 228/1)
- Installation/maintenance instructions are included with each two-valve module

## Dimensions inches (mm)

